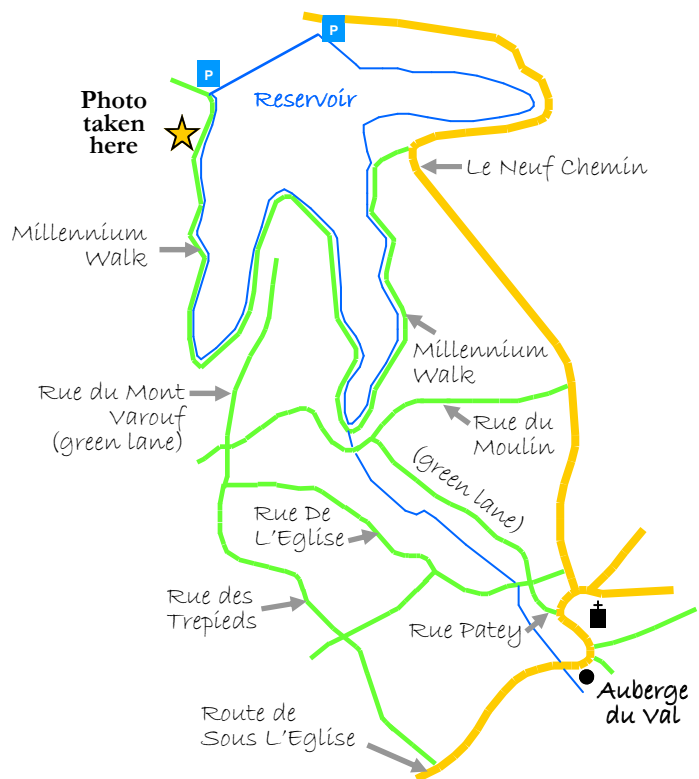




The Millennium Walk at St. Saviour's Reservoir

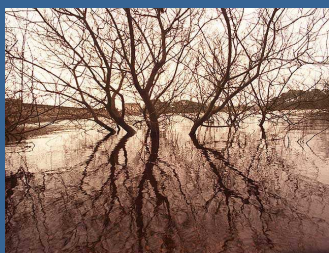
February 2013



Guernsey Country Walks—St. Saviour

The Millennium nature trail is a wonderful tranquil walk in any season. Do also explore the Ruettes Tranquilles and green lanes nearby—particularly Rue Patey which follows the Sous L'Eglise stream into the reservoir.

Monday	Tuesday	Wednesday	Thursday	Friday	Saturday	Sunday
				1	2	3
4	5	6	7	8	9	10
11	12	13	14	15	16	17
	Shrove Tuesday	Ash Wednesday	Valentines Day			
18	19	20	21	22	23	24
25	26	27	28			



Discover our Millennium Walk...

'3km of beautiful nature trail, encircling the St Saviour's reservoir'

'A valuable Island habitat, home to many rare forms of animal and plant life'

GuernseyWater
A DIVISION OF THE PUBLIC SERVICES DEPARTMENT